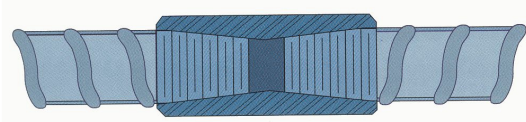




# LENTON® Standard Coupler



		∅	 +	
in.-lb.	Metric	Canada	Nm	ft.-lb.
#3	10	---	40	30
#4	12	10M	40	30
---	14	---	80	60
#5	16	15M	120	90
---	18	---	150	110
#6	20	20M	180	130
#7	22	---	220	160
---	24	---	270	200
#8	25	25M	270	200
---	26	26M	270	200
#9	28	30M	270	200
---	30	---	300	200*
#10	32	---	300	200*
---	34	---	300	200*
#11	36	35M	300	200*
---	38	---	350	200*
---	40	---	350	200*
#14	43	45M	350	200*
---	50	---	350	200*
#18	57	55M	350	200*

+Metric and imperial table values are not a direct conversion.

\*Americas only

**WARNINGS:**

1. ERICO products shall be installed and used only as indicated in ERICO product instruction sheets and training materials. Instruction sheets are available at [www.erico.com](http://www.erico.com) and from your ERICO customer service representative.
2. ERICO products must never be used for a purpose other than the purpose for which they were designed or in a manner that exceeds specified load ratings.
3. All instructions must be completely followed to ensure proper and safe installation and performance.
4. Improper installation, misuse, misapplication or other failure to completely follow ERICO's instructions and warnings may cause product malfunction, property damage, serious bodily injury and death.

The customer is responsible for:

- a. Conformance to all governing codes.
- b. The integrity of structures to which the products are attached, including their capability of safely accepting the loads imposed, as evaluated by a qualified engineer.
- c. Using appropriate industry standard hardware as noted above.

SAFETY INSTRUCTIONS: All governing codes and regulations and those required by the job site must be observed. Always use appropriate safety equipment such as eye protection, hard hat, and gloves as appropriate to the application.

The diagrams illustrate the following steps and warnings:

- Diagram 1:** Inspection of the coupler threads. A magnifying glass is used to inspect the threads. A brush is used to clean the threads. A checkmark indicates correct inspection and cleaning.
- Diagram 2:** Warning against using a hammer to force the coupler onto the bar. A hammer icon is shown striking the coupler, with a 'no' symbol indicating this is incorrect.
- Diagram 3:** Warning against using a screwdriver to force the coupler onto the bar. A screwdriver icon is shown prying the coupler, with a 'no' symbol indicating this is incorrect.
- Diagram 4:** Correct installation method. The coupler is shown being slid onto the bar. A checkmark indicates this is correct.
- Diagram 5:** Torqueing the coupler. A torque wrench is used to tighten the coupler. The torque value is indicated as 4 - 4.5. A checkmark indicates this is correct.
- Diagram 6:** Final torqueing. A torque wrench is used to tighten the coupler. The torque value is indicated as Nm (ft.-lb.). A checkmark indicates this is correct.

# LENTON® Detailer's Guide (Americas)

**A**= Diameter or Hex  
**B**= Length  
**C**= Nominal Rebar Gap

All dimensions in inches [mm]

LENTON® Standard Couplers - A2

Bar Size	Part Number	"A" Hex	"A" Round	"B"	"C"	Figure
#4	EL12A2	0.68 [17.3]	----	1.63 [41.3]	0.47 [11.9]	Fig A
#5	EL16A2	0.88 [22.2]	----	2.19 [55.6]	0.47 [11.9]	Fig A
#6	EL20A2	1.06 [27.0]	----	2.81 [71.4]	0.63 [15.9]	Fig A
#7	EL22A2	1.19 [30.2]	----	3.16 [80.2]	0.63 [15.9]	Fig A
#8	EL25A2	----	1.38 [34.9]	3.34 [84.9]	0.63 [15.9]	Fig A
#9	EL28A2	----	1.50 [38.1]	3.59 [91.3]	0.63 [15.9]	Fig A
#10	EL32A2	----	1.75 [44.5]	3.78 [96.0]	0.63 [15.9]	Fig A
#11	EL36A2	----	1.88 [47.6]	3.97 [100.8]	0.63 [15.9]	Fig A
#14	EL43TA2	----	2.25 [57.2]	5.25 [133.4]	0.84 [21.4]	Fig A
#18	EL57TA2	----	3.00 [76.2]	6.47 [164.3]	0.84 [21.4]	Fig A

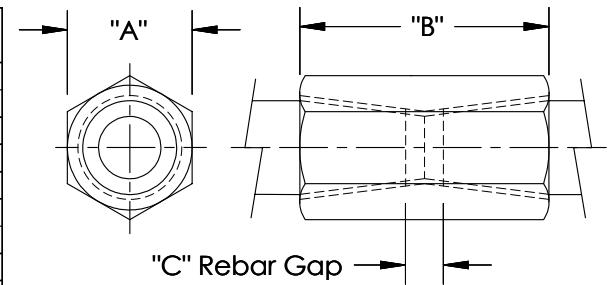


Figure A

LENTON® Transition Couplers - A2

Bar Size	Part Number	"A" Hex	"A" Round	"B"	"C"	Figure
#5 / #4	EL1612A2	0.88 [22.2]	----	2.31 [58.7]	0.88 [22.2]	Fig B
#6 / #5	EL2016A2	1.06 [27.0]	----	3.00 [76.2]	1.03 [26.2]	Fig B
#7 / #6	EL2220A2	1.19 [30.2]	----	3.41 [86.5]	1.06 [27.0]	Fig B
#8 / #7	EL2522A2	----	1.38 [34.9]	3.69 [93.7]	1.06 [27.0]	Fig B
#9 / #8	EL2825A2	----	1.50 [38.1]	3.91 [99.2]	1.06 [27.0]	Fig B
#10 / #8	EL3225A2	----	1.75 [44.5]	4.00 [101.6]	1.06 [27.0]	Fig B
#10 / #9	EL3228A2	----	1.75 [44.5]	4.13 [104.8]	1.06 [27.0]	Fig B
#11 / #9	EL3628A2	----	1.88 [47.6]	4.22 [107.2]	1.06 [27.0]	Fig B
#11 / #10	EL3632A2	----	1.88 [47.6]	4.31 [109.5]	1.06 [27.0]	Fig B
#14 / #10	EL43T32A2	----	2.25 [57.2]	5.00 [127.0]	1.22 [31.0]	Fig B
#14 / #11	EL43T36A2	----	2.25 [57.2]	5.09 [129.4]	1.22 [31.0]	Fig B
#18 / #11	EL57T36A2	----	3.00 [76.2]	5.69 [144.5]	1.19 [30.2]	Fig B
#18 / #14	EL57T43TA2	----	3.00 [76.2]	6.31 [160.3]	1.31 [33.3]	Fig B

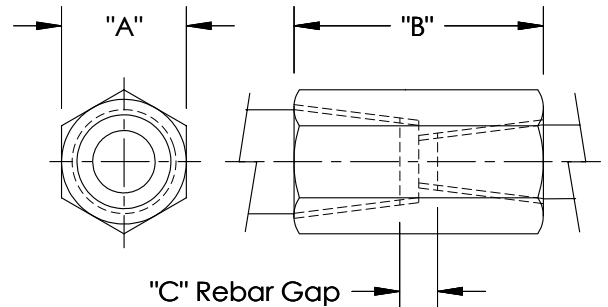


Figure B

**WARNING:**

- ERICO products shall be installed and used only as indicated in ERICO product instruction sheets and training materials. Instruction sheets are available at [www.erico.com](http://www.erico.com) and from your ERICO customer service representative.
- ERICO products must never be used for a purpose other than the purpose for which they were designed or in a manner that exceeds specified load ratings.
- All instructions must be completely followed to ensure proper and safe installation and performance.
- Improper installation, misuse, misapplication or other failure to completely follow ERICO's instructions and warnings may cause product malfunction, property damage, serious bodily injury and death.

The customer is responsible for:

- Conformance to all governing codes.
- The integrity of structures to which the products are attached, including their capability of safely accepting the loads imposed, as evaluated by a qualified engineer.
- Using appropriate industry standard hardware as noted above.

**SAFETY INSTRUCTIONS:**

All governing codes and regulations and those required by the job site must be observed. Always use appropriate safety equipment such as eye protection, hard hat, and gloves as appropriate to the application.

# LENTON® Detailer's Guide (Americas)

A= Diameter or Hex  
B= Length  
C= Nominal Rebar Gap

All dimensions in inches [mm]

LENTON® FORM SAVER - SA

Bar Size	Part Number	"A" Hex	"A" Round	"B"	"C"	"E"	Figure
#4	EL12SA	0.68 [17.3]	----	1.94 [49.2]	0.47 [11.9]	2.25 [57.2]	Fig C
#5	EL16SA	0.88 [22.2]	----	2.50 [63.5]	0.47 [11.9]	2.25 [57.2]	Fig C
#6	EL20SA	1.06 [27.0]	----	3.13 [79.4]	0.66 [16.7]	2.25 [57.2]	Fig C
#7	EL22SA	1.19 [30.2]	----	3.47 [88.1]	0.66 [16.7]	2.25 [57.2]	Fig C
#8	EL25SA	----	1.38 [34.9]	3.66 [92.9]	0.66 [16.7]	2.25 [57.2]	Fig C
#9	EL28SA	----	1.50 [38.1]	3.88 [98.4]	0.63 [15.9]	2.50 [63.5]	Fig C
#10	EL32SA	----	1.75 [44.5]	4.03 [102.4]	0.63 [15.9]	2.50 [63.5]	Fig C
#11	EL36SA	----	1.88 [47.6]	4.22 [107.2]	0.63 [15.9]	2.50 [63.5]	Fig C

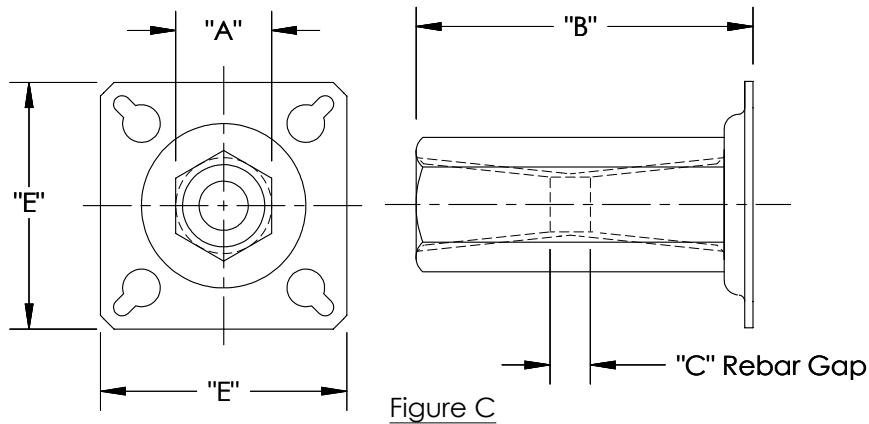


Figure C

LENTON® Position Couplers - P8

Bar Size	Part Number	"A" Round	"B"	"B1"		"C"		Figure
				min/max	min/max	min/max	min/max	
#5	EL16P8	1.81 [46.0]	5.12 [130.0]	5.44 6.69	[138.1] [169.9]	3.75 4.97	[95.3] [126.2]	Fig D
#6	EL20P8	1.81 [46.0]	5.84 [148.3]	6.19 7.81	[157.2] [198.4]	4.00 5.63	[101.6] [142.9]	Fig D
#7	EL22P8	1.81 [46.0]	6.31 [160.3]	6.63 8.44	[168.3] [214.3]	4.13 5.94	[104.8] [150.8]	Fig D
#8	EL25P8	1.81 [46.0]	6.72 [170.7]	7.06 8.97	[179.4] [227.8]	4.38 6.25	[111.1] [158.8]	Fig D
#9	EL28P8	2.50 [63.5]	6.88 [174.8]	7.25 9.25	[184.2] [235.0]	4.25 6.28	[108.0] [159.5]	Fig D
#10	EL32P8	2.50 [63.5]	7.31 [185.7]	7.69 9.78	[195.3] [248.4]	4.50 6.63	[114.3] [168.3]	Fig D
#11	EL36P8	2.50 [63.5]	7.81 [198.4]	8.19 10.38	[208.0] [263.5]	4.81 7.03	[122.2] [178.6]	Fig D
#14	EL43TP8	3.00 [76.2]	11.69 [296.9]	12.31 15.09	[312.7] [383.4]	7.91 10.69	[200.8] [271.5]	Fig E
#18	EL57TP8	4.00 [101.6]	13.97 [354.8]	14.56 18.00	[369.9] [457.2]	8.97 12.38	[227.8] [314.3]	Fig E

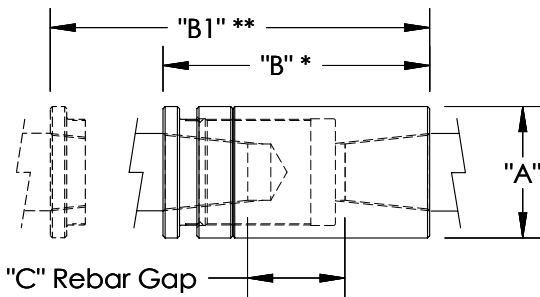


Figure D

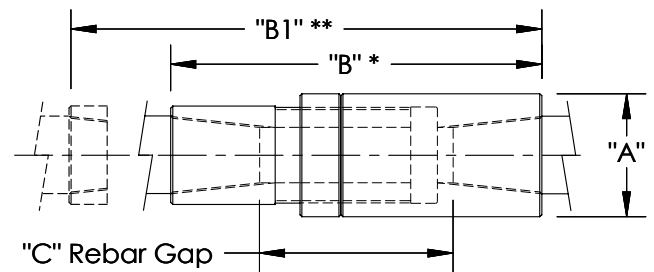


Figure E

\* Shown in Shipped Position

\*\* Shown in Fully Open Installed Position

CADDY, CADWELD, CRITEC, ERICO, ERIFLEX, ERITECH, and LENTON are registered trademarks of ERICO International Corporation.

# LENTON® Detailer's Guide (Americas)

**A**= Diameter or Hex  
**B**= Length  
**C**= Nominal Rebar Gap

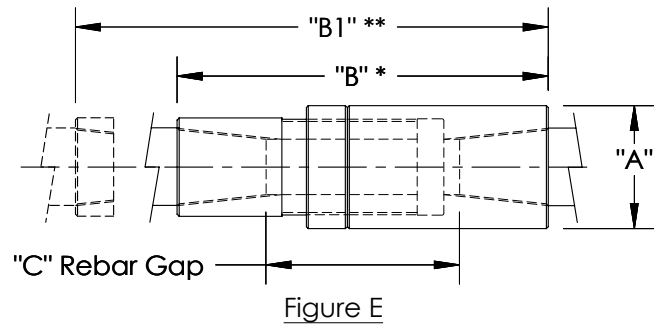
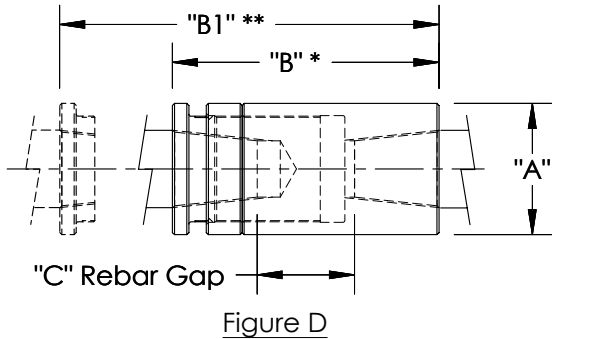
All dimensions in inches [mm]

LENTON® Position Couplers - P9

Bar Size	Part Number	"A" Round	"B"	"B1"	"C"	Figure
#6	EL20P9	1.81 [46.0]	4.34 [110.3]	4.69 [119.1]	2.50 [63.5]	Fig D
#7	EL22P9	1.81 [46.0]	4.66 [118.3]	5.00 [127.0]	2.47 [62.7]	Fig D
#8	EL25P9	1.81 [46.0]	4.97 [126.2]	5.31 [134.9]	2.63 [66.7]	Fig D
#9	EL28P9	2.50 [63.5]	5.16 [131.0]	5.50 [139.7]	2.53 [64.3]	Fig D
#10	EL32P9	2.50 [63.5]	5.41 [137.3]	5.75 [146.1]	2.59 [65.9]	Fig D
#11	EL36P9	2.50 [63.5]	5.78 [146.8]	6.13 [155.6]	2.72 [69.1]	Fig D
#14	EL43TP9	3.00 [76.2]	8.81 [223.8]	9.44 [239.7]	5.06 [128.6]	Fig E
#18	EL57TP9	4.00 [101.6]	10.50 [266.7]	11.13 [282.6]	5.50 [139.7]	Fig E

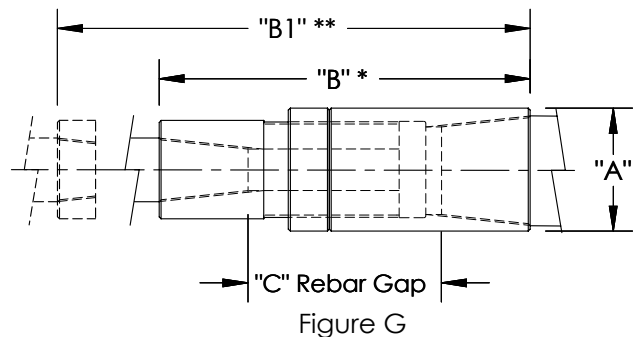
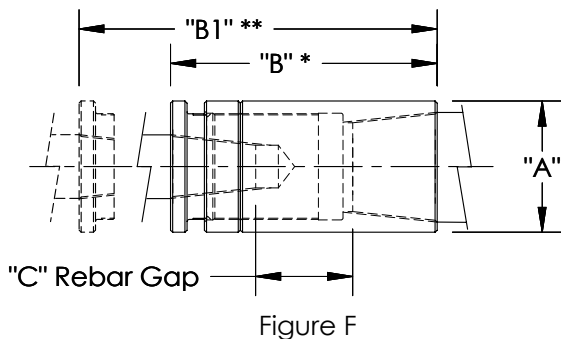
LENTON® Position Couplers - P14L

Bar Size	Part Number	"A" Round	"B"	"B1"	"C"	Figure
#4	EL12P14L	1.00 [25.4]	3.66 [92.9]	4.00 [101.6]	2.56 [65.1]	Fig E
#5	EL16P14L	1.25 [31.8]	4.28 [108.7]	4.63 [117.5]	2.72 [69.1]	Fig E



LENTON® Position Transition Couplers - P9

Bar Size	Part Number	"A" Round	"B"	"B1"	"C"	Figure
#7 / #6	EL2220P9	1.81 [46.0]	4.66 [118.3]	5.00 [127.0]	2.66 [67.5]	Fig F
#8 / #7	EL2522P9	1.81 [46.0]	4.97 [126.2]	5.31 [134.9]	2.72 [69.1]	Fig F
#9 / #8	EL2825P9	2.50 [63.5]	5.16 [131.0]	5.50 [139.7]	2.66 [67.5]	Fig F
#10 / #9	EL3228P9	2.50 [63.5]	5.41 [137.3]	5.75 [146.1]	2.69 [68.3]	Fig F
#11 / #10	EL3632P9	2.50 [63.5]	5.78 [146.8]	6.13 [155.6]	2.88 [73.0]	Fig F
#14 / #11	EL43T362P9	3.00 [76.2]	8.81 [223.8]	9.44 [239.7]	5.56 [141.3]	Fig G
#18 / #14	EL57T43TP9	4.00 [101.6]	10.50 [266.7]	11.13 [282.6]	6.13 [155.6]	Fig G



\* Shown in Shipped Position  
\*\* Shown in Fully Open Installed Position

CADDY, CADWELD, CRITEC, ERICO, ERIFLEX, ERITECH, and LENTON are registered trademarks of ERICO International Corporation.

# LENTON® Detailer's Guide (Americas)

A= Diameter or Hex  
B= Length  
C= Nominal Rebar Gap

All dimensions in inches [mm]

LENTON® TERMINATOR - D6

Bar Size	Part Number	"A" Round	ø"A1"	"B"	Figure
#4	EL12D6	1.38 [34.9]	----	0.56 [14.3]	Fig H
#5	EL16D6	1.50 [38.1]	----	0.88 [22.2]	Fig H
#6	EL20D6	1.88 [47.6]	----	1.13 [28.6]	Fig H
#7	EL22D6	2.00 [50.8]	----	1.25 [31.8]	Fig H
#8	EL25D6	2.25 [57.2]	----	1.38 [34.9]	Fig H
#9	EL28D6	2.75 [69.9]	----	1.50 [38.1]	Fig H
#10	EL32D6	3.00 [76.2]	----	1.56 [39.7]	Fig H
#11	EL36D6	3.25 [82.6]	----	1.69 [42.9]	Fig H
#14	EL43TD6	4.00 [101.6]	2.50 [63.5]	2.13 [54.0]	Fig I
#18	EL57TD6	5.13 [130.2]	3.00 [76.2]	2.75 [69.9]	Fig I

NOTE: Thread does not need to be flush with end of LENTON TERMINATOR. Thread may be +/- 2 threads from backside of coupler.

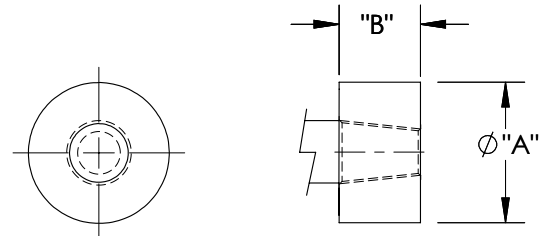


Figure H  
Sizes #4 to #11

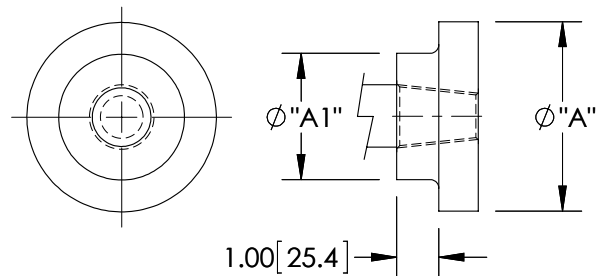


Figure I  
Sizes #14 and #18 Only

LENTON® Weldable Couplers - C2 / C3J

Bar Size	Part Number	"A" Round	ø"A1"	ø"A2" Drill Thru	"B"	"C"	Figure
#4	EL12C2	0.75 [19.1]	0.44 [11.1]	0.35 [8.9]	1.19 [30.2]	0.59 [15.1]	Fig J
#5	EL16C2	1.00 [25.4]	0.56 [14.3]	0.47 [11.9]	1.38 [34.9]	0.50 [12.7]	Fig J
#6	EL20C3J	1.25 [31.8]	0.88 [22.2]	----	2.16 [54.8]	1.06 [27.0]	Fig J
#7	EL22C3J	1.25 [31.8]	0.75 [19.1]	----	2.41 [61.1]	1.16 [29.4]	Fig J
#8	EL25C3J	1.56 [39.7]	1.00 [25.4]	----	2.53 [64.3]	1.19 [30.2]	Fig J
#9	EL28C3J	1.56 [39.7]	0.94 [23.8]	----	2.69 [68.3]	1.19 [30.2]	Fig J
#10	EL32C3J	2.00 [50.8]	0.94 [23.8]	----	2.88 [73.0]	1.28 [32.5]	Fig J
#11	EL36C3J	2.00 [50.8]	1.13 [28.6]	----	2.97 [75.4]	1.28 [32.5]	Fig J
#14	EL43TC3J	2.38 [60.3]	1.44 [36.5]	----	3.75 [95.3]	1.50 [38.1]	Fig J
#18	EL57TC3J	3.13 [79.4]	1.75 [44.5]	----	4.50 [114.3]	1.69 [42.9]	Fig J

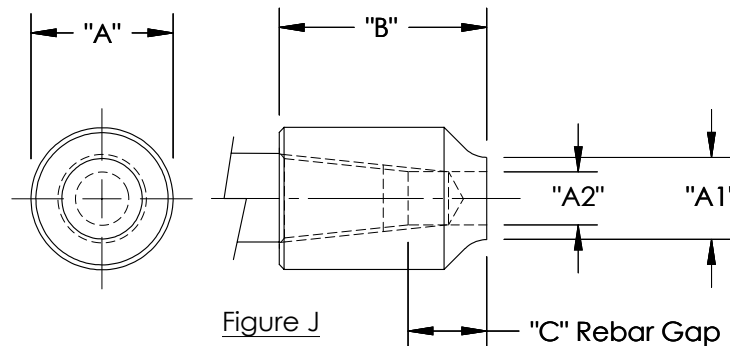


Figure J