

Procheck FR200

FOR VAPOR CONTROL

APPLICATIONS

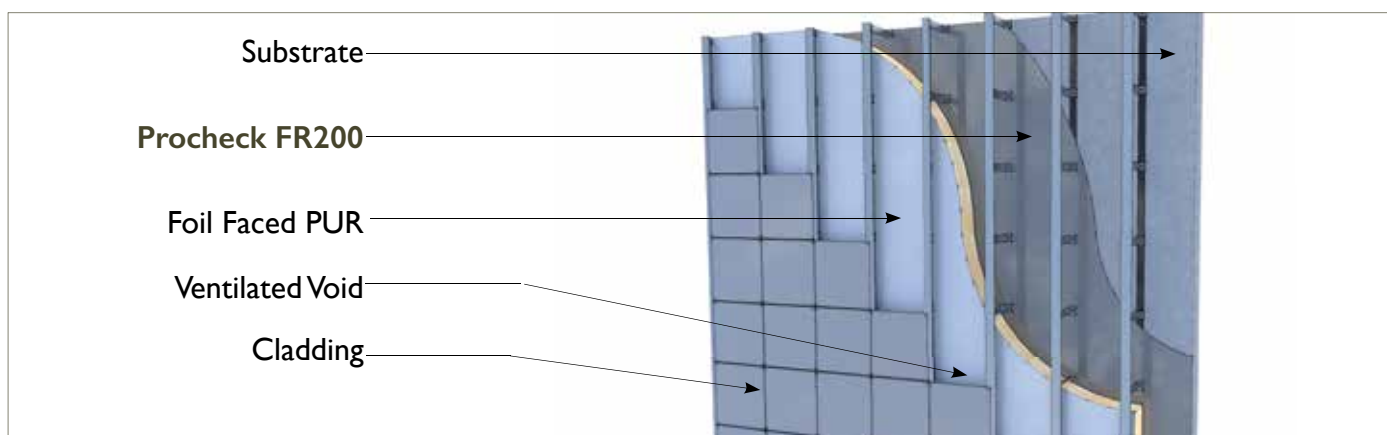
Procheck FR200 is used as a fire retardant vapor barrier on the inside of roof and wall structures with semi-open structure in new build and renovation projects.

Lacquered aluminium/Glass scrim/ PE

- Optimal vapor barrier
- Fire retardant euroclass B-s1,d0

TYPICAL CHARACTERISTICS

Property	Test Method	Units	Value
Total grammage	EN 1849-2	g/m ²	93
Service temperature		°C	100
Temporary UV Exposure		months	9
Water resistance (after ageing)	EN 1928		W1
Reaction to fire	EN 13501-1		B-s1, d0
Flame spread index	ASTM E84		10
Smoke development index	ASTM E84		0
Water vapor resistance Sd	EN 1931	m	44
Tensile strength MD	EN 12311-1	N/50mm	175
Tensile strength CD	EN 12311-1	N/50mm	165
Elongation MD	EN 12311-1	%	4
Elongation CD	EN 12311-1	%	4
Tear strength MD	EN 12310-1	N	110
Tear strength CD	EN 12310-1	N	95
Resistance against impact	EN 12691	mm	250
Durability against aging: Water vapor resistance	EN 1296 / EN 1931		Passed
Durability against alkali:	EN 1847 / EN 12311-2		Passed



Procheck FR200

INSTALLATION

Preparation of the Substrate

Before installing Procheck FR200, ensure that the surfaces to be covered are firmly fixed, clean and dry. Remove any protrusions and fill holes, gaps and cavities in concrete or masonry surfaces with a proprietary repair mortar and allow curing.

Weather Conditions

Laying the reinforced vapor barrier in high wind and heavy rain conditions is not recommended.

Fixing Details

Where the wall system doesn't use fixing rails, install Probond Tape vertically at centres no greater than 600mm, and then use a rubber roller over the tape to ensure strong adhesion to the substrate. Temporarily fix Procheck FR200 against the substrate over the tape, again using a rubber roller to ensure that strong adhesion to the Probond Tape is achieved. Finally, mechanically fix Procheck FR200, at the top and bottom of the roll, at no greater than 2m centres over the probond tape.

Where there is a fixing rail, the membrane should be temporarily fixed in place to the substrate using vertical runs of Probond Tape, located at the same centres as the panel fixing rails. Use a rubber roller over the tape to ensure strong adhesion to the substrate. Temporarily fix Procheck FR200 against the substrate over the tape, again using a rubber roller to ensure strong adhesion to the Probond Tape is achieved. When installing the panel fixing rails, use the previously installed Probond Tape as a guide and mechanically fix directly over to ensure the correct centres and provide an increased seal at these penetrations.

Laps

Lay the reinforced vapor barrier flat and without wrinkles. Laps should be sealed with two continuous runs of 15mm wide Probond Tape. The minimum width of a lap should be 150mm. Profoil Tape should be utilised to seal down edge of lap.

Penetrations/Openings

The membrane should be cut and neatly formed around all openings and penetrations. The membrane should be made air and vapor tight with single-sided Profoil Tape.

Puncture Damage

Where puncture damage is unavoidable, apply a good sized patch of membrane (min. 150mm beyond damaged area) over the puncture, ensuring that there is a continuous bead of tape all the way around the hole. For small scuff type damage of less than 25mm, Profoil Tape may be used as an alternative.

Details

Attention to detail is important. The reinforced vapor barrier needs to be continuous, and particular care is required sealing around penetrations and at perimeters where roof and wall meets.

DELIVERY & SITE HANDLING

Procheck FR200 is supplied in rolls of 1.6m x 50m.

Rolls of Procheck FR200 are supplied to site with a label clearly identifying product name and grade. Rolls should be stored flat or upright on a clean, level surface and kept under cover.

Accessories:

Probond Tape: Supplied in rolls of 15mm x 22.5m.

Approximate usage rate: 5 rolls per roll of membrane for laps.

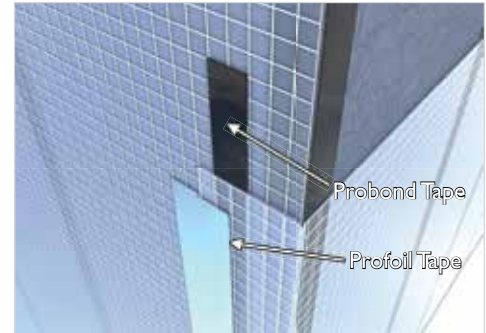
Profoil Tape: Supplied in rolls of 100mm x 45m.

Approximate usage rate: 5 rolls per 3 rolls of membrane.

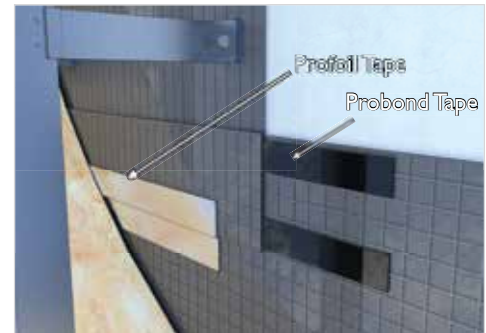
HEALTH & SAFETY

There are no health and safety hazards associated with normal usage of Procheck FR200.

For further information and details refer to the MSDS of the product.



Corner Joint



Lap joint detail



Fixing detail

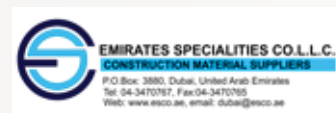


Temporary fixing



Download a brochure from our website...

www.proctorgroup.com



contact@proctorgroup.com | +44 (0) 1250 872261

Revised September 2016